

617-2200 & 2305-2690MHz Diplexer

SDXS-6A-WB / SDXT-6A-WB

RF Diplexer for 617-2200 & 2305-2690 MHz Band Combining for multi-band DAS.

- Seamless work for WCS/BRS band combining in the Multi-band DAS
- Wall-Mountable Diplexer
- Single/Twin Models
- Low Insertion/High Port Isolation
- Compact Size for Easy Installation
- Outdoor IP67 Rated
- Low PIM Rated



Parameter		Specifications	
Model	Single	SDXS-6A-WB	
	Twin	SDXT-6A-WB	
Freq. Range [MHz]		Low, PCS & AWS (617-2200)	WCS & BRS (2305-2690)
Insertion Loss [dB]		0.35 (0.5 for 2180-2200)	0.3
Return Loss [dB]		19	
Port Isolation [dB]		50	
Power Rating [W]		200 Avg., 1000 Peak	
PIM [dBc]		-161	
IP Rating		IP67, 30-day Salt Fog IAW ASTM-B117	
Protection		Goretex Vent Plug & Ground Terminal (6 AWG)	
Operating Temp. [°F]		-40 to +149	
RF Connector		4.3-10 Female	
Size (W x H x D)		Single: 5.27" x 5.41" x 1.69", Twin: 5.27" x 5.41" x 3.62"	
Weight [lb]		Single: 3.8, Twin: 7.3	

* Specifications are subject to change without prior notification.

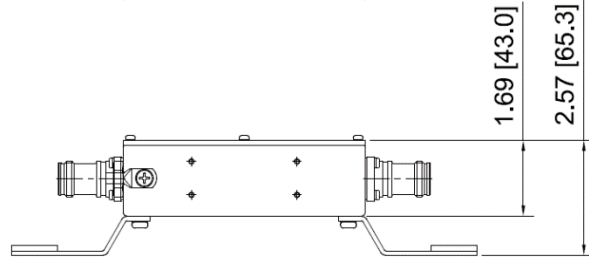
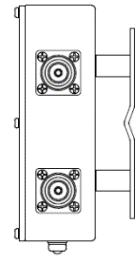
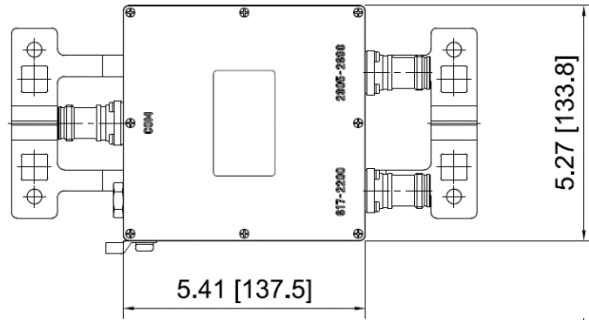
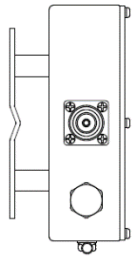
Rev.2

617-2200 & 2305-2690MHz Diplexer

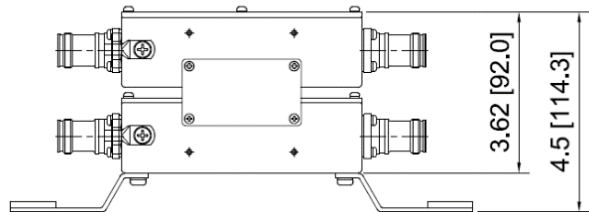
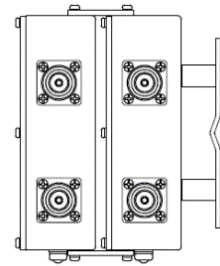
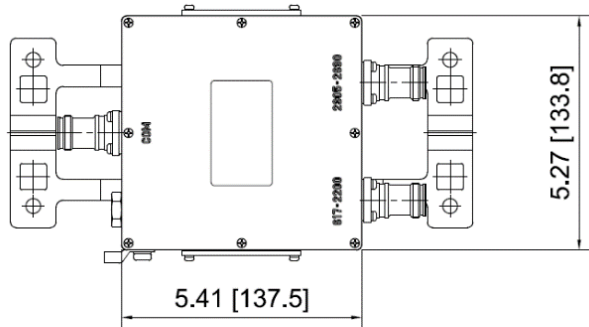
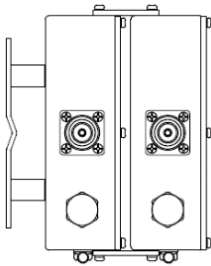
SDXS-6A-WB / SDXT-6A-WB

Mechanical Drawing

SDXS-6A-WB



SDXT-6A-WB



Inch [mm]